

Duro 4.5 Tamp or Tamp/Blow Pressure Sensitive Labeler

Description

The Duro 4.5 Labeling Applicator can be fitted with our Tamp or Tamp/Blow Option. The Tamp or Tamp/Blow Option is necessary to properly apply labels into a recessed panel, when direct contact with the product cannot be achieved, or is inadvisable due to specific product characteristics. Occasionally, tamp application may be required to properly apply labels when the speed of the product is inconsistent, resulting in poor label application using a direct method.



Duro 4.5 Tamp/Blow Applicator

With the Tamp Option, the label feeds from the web onto a custom vacuum pad. At the presence of a product, the pneumatic cylinder extends, tamping the label onto the product. The cylinder then retracts and a new label is fed onto the vacuum pad in preparation for the next cycle. With the Tamp Option, the label can be applied from above, below, or from the side since the label is held securely in place by the vacuum.

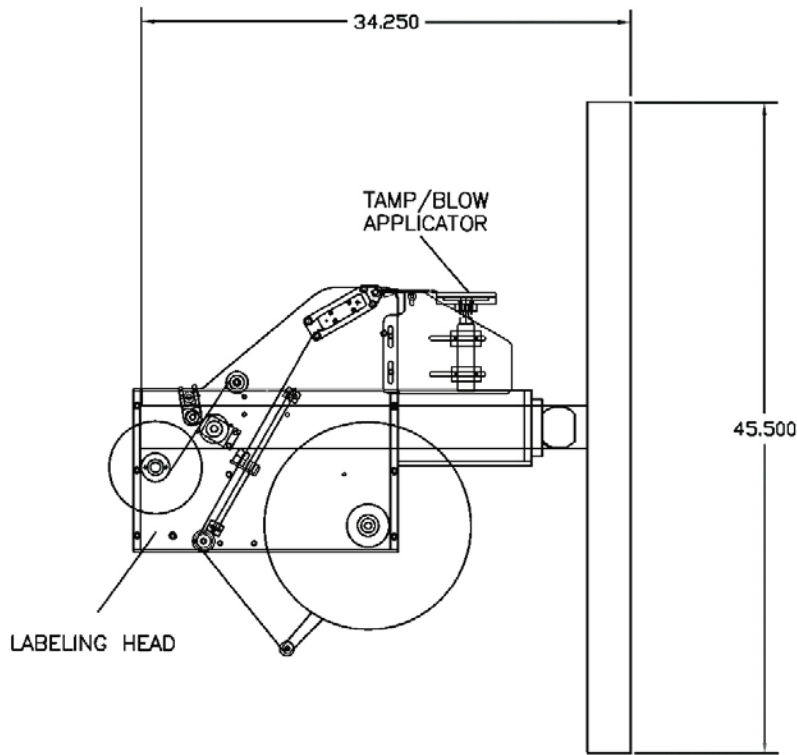
With the Tamp/Blow Option, the label is also dispensed onto a vacuum pad. However, the pneumatic cylinder is restricted from actual contact with the product. As the pneumatic cylinder reaches the end of its travel, a burst of air “blows” the label onto the product. This type of application is useful when the label is in a hard-to-reach area or the product is too fragile for direct contact by the tamp pad.



Duro Tamp/Blow Label Gap Sensor

Specification

- Speed Up to 75 ppm
- Labeling Head motor: 1/8 hp variable speed DC drive
- Labeling Head dimensions: 19" x 19"
- Labeling Head weight: 60 pounds
- Power requirements: 120 volt AC, 60 cycle, 5 amp power
- Compressed air: 3-4 cfm @ 65 psi required



TOP VIEW

Features

- Apply labels from 1" to 4 1/2" tall and 6" long.
- Accommodates conveyor speeds up to 1000 ipm with a maximum rate of 75 labels per minute depending on label length.
- Recognizes 1/8" standard to 1/4" label gap.
- Accepts 12" label roll and industry standard 3" diameter core.
- Photoeye product detection and photoeye gap detection.

Options

- Hot Stamp coding for lot/date information.
- Stepper motor/drive provides finer control of label dispensing speed.
- Mobile T-Base Stand with locking casters.

