



Top/Down shown
with normal conveyor

Top/Down or Bottom/Up Pressure Sensitive Labeler

Description

The Duro 4.5 labeling Applicator can be combined with an appropriate conveyor to create an Automatic labeling Machine for applying labels from the top down onto a horizontal surface, from below onto the bottom of a container, or both.

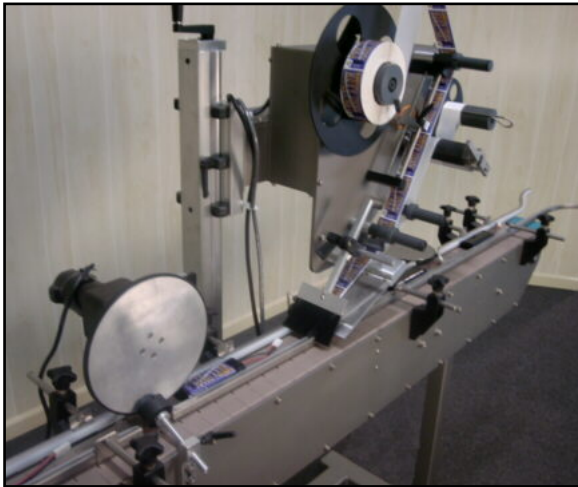
Conveyors for these applications are specified based on the product being labeled. The selection of a belt, chain, or banded conveyor is usually dictated by the characteristics of the product. Additional factors to consider include how the product will be controlled as it travels through the machine, the product's physical weight, and shape.

The conveyor for top down application will generally be low profile in nature. Bottom up applications usually require two conveyors placed end-to-end allowing the label to be applied as the product transitions from one conveyor to the other.

A Stepper Motor Option is available when extremely accurate label placement is critical. Encoders may also be included to accurately read the product location on the conveyor further enhancing label placement accuracy.



Top/Down Bottom/Up shown with side applicators.



Specification

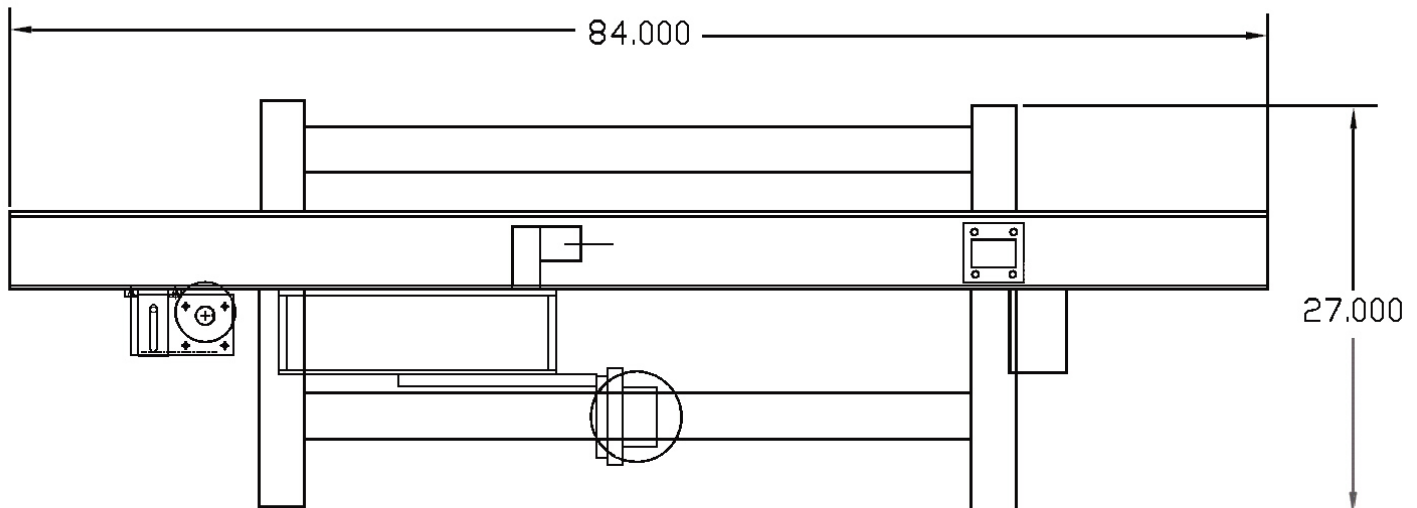
- Conveyor width: 4 ½"
- Conveyor height: 32" Standard (+2" up)
- Conveyor length: 84"
- Conveyor motor: ⅛ hp variable speed DC drive
- Overall machine width: 42"
- Overall machine height: 66"
- Overall machine weight: 350 pounds
- Power requirements: 120 volt AC, 60 cycle, 10 amp power
- Compressed air: 3-4 cfm @ 65 psi if required

Features

- Apply labels from 1" to 4 ½" tall and 14" long.
- Accommodates conveyor speeds up to 1000 ipm with a maximum rate of 100 labels per minute.
- Recognizes ⅛" standard to ¼" label gap.
- Accepts 12" label roll and industry standard 3" diameter core.
- Photoeye product detection and photoeye gap detection.

Options

- Hot Stamp coding for lot/date information.
- Stepper motor/drive provides finer control of label dispensing speed.



Top/Down with Standard Conveyor - Overhead View