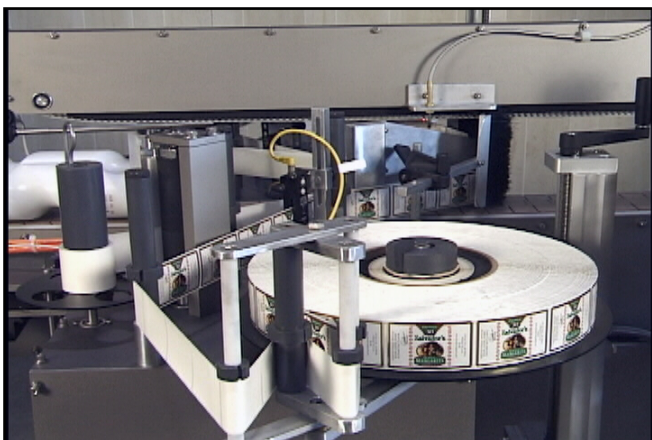


2000 NW showing front, back and neck Labeling Stations

2000NW Pressure Sensitive Labeler

Description

The model 2000NW is designed for packages as simple as a single wrap label on a round bottle and as complex as a front, back, and neck label application. All speeds are synchronized to a maximum of 2000 inches per minute.



The 2000NW has many new and redesigned features. It has servo driven, twin feed-screws with an added feature that resets the “home” position that is so important for proper container control. The “homing” feature also allows for a quick change over from one package to another. The dancer arm has been redesigned to keep regular tension on the web to increase accuracy. It has a new and improved Pinch Grip mechanism. The state-of-the-art gap sensor includes a new “teach button” that actually teaches the machine to read the label gap automatically. This means that reading transparent labels is as easy as reading opaque ones.

The model 2000NW is a production labeler designed for accuracy and dependability as well as competitive labeling speeds. It's a new class of Pressure Sensitive Labelers!

Features

- Designed for 1" to 6" diameter and 14" tall containers, and label sizes from 1" to 6" tall and 14" in length.
- Label can be moved up to 8" from base of container.
- Accepts random bottle feeding or continuous production. Sensors control the infeed flow by starting and stopping the feedscrews.
- Microprocessor controlled with touch screen operator interface. Stepper driven conveyor, servo-driven applicators.
- Speeds to 300 bpm depending on label length. Web speeds up to 2000 ipm.

Options

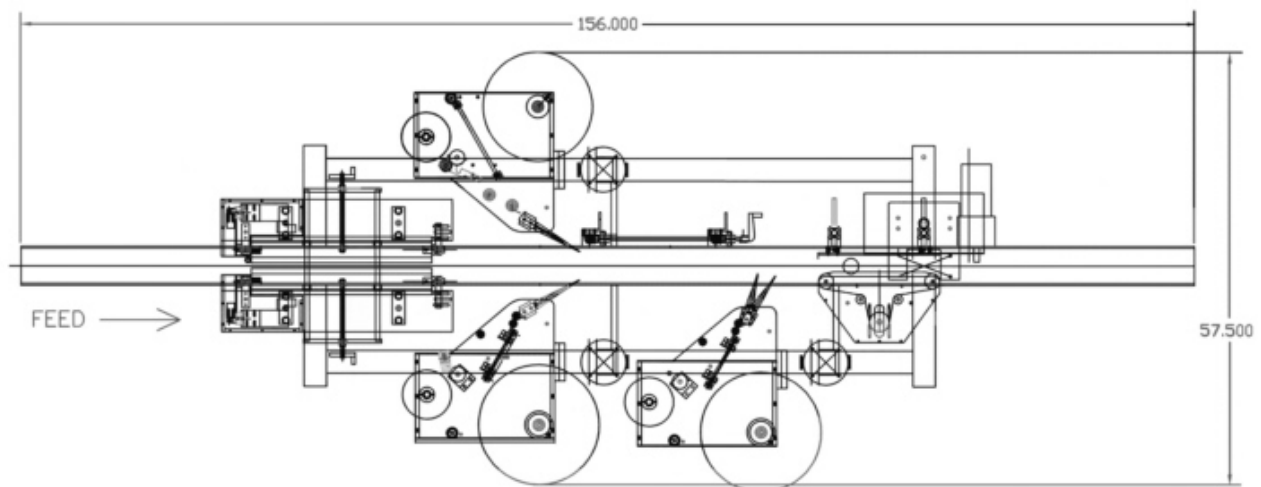
- Hot Stamp Coder for lot/date information.
- Extra Tall Label kit for labels up to 7 ½" tall
- Wrap station permits labeling of round containers with a single wrap label or front and back application

Specifications

- Conveyor width: 4 ½"
- Conveyor height: 32" Standard (+ 2" up)
- Conveyor length: 156"
- Maximum web roll: 14"
- Overall width: 52"
- Overall machine length: 156"
- Overall machine height: 68"
- Overall machine weight: 600 pounds
- Power requirements: 120 volt AC, 60 cycles, 20 amp power
- Compressed air: 65 psi @ 3-4 cfm if required



2000NW Neck Wrap Station



2000NW Top View