



## 680NR Pressure Sensitive Labeler

### Description

The model 680NR is a fully automatic labeler especially designed to be an easy machine to operate. It comes with a self-teaching label gap sensor that makes set up uncomplicated and trouble-free. Our new pinch grip design simplifies the way the web is threaded through the machine.

Even though the 680NR Labeler is simple in its operation, the label application is still excellent. The machine has a high rate of consistency with a fixed conveyor speed of 680 ipm. It is designed for non-round containers from 1" to 5" in diameter and for labels from 1" to 4 ½" tall and from 2" to 12" in length.

Standard features on the model 680NR are a self-teaching label gap sensor, a

microprocessor control, and stepper-driven labeling applicator.

Options such as label coding, extra tall label application, and a friction spacing wheel make the 680 versatile as well as easy to operate.



### Features

- Label 1" to 5" non-round containers.
- Apply labels from 1" to 4 ½" tall and 12" long.
- Label can be moved up to 6" from base of container.
- Accepts random or continuous bottle feed.
- Changeovers require no tools and take less than 10 minutes.
- Touchscreen Interface.
- Speeds to 60 bpm depending on label length.
- Fixed conveyor, wrap station, and web speeds.
- Accepts industry standard 3" diameter core.
- Maximum label roll size of 12".

needed for coder

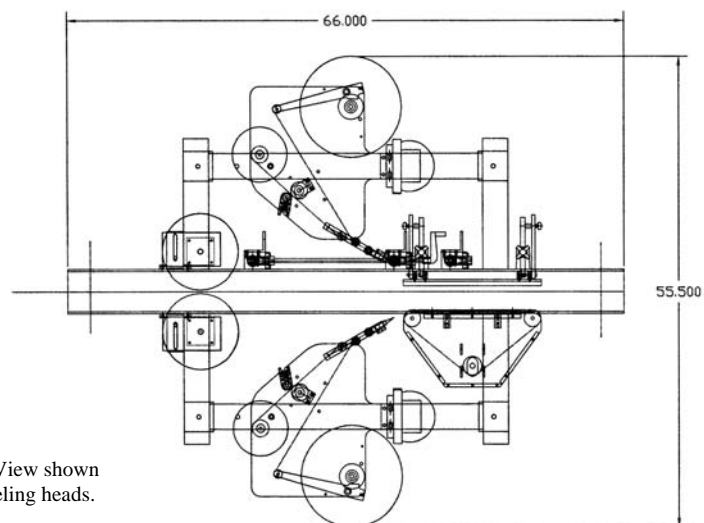
### Options

- Hot Stamp coding for lot/date information.
- Extra Tall Label Kit for labels up to 7 ½" tall.
- Infeed Spacing Wheel powered by a separate DC motor.
- "Gallon" upgrade for containers up to 6½".
- Locking Casters



### Specification

- Conveyor width: 4 ½"
- Conveyor height: 32" Standard (+2" up)
- Conveyor length: 66"
- Conveyor motor: 1/12 hp fixed speed AC motor
- Overall machine width: 55½ "
- Overall machine height: 68"
- Overall machine length: 66"
- Overall machine weight: 275 pounds
- Labeling Head motor: Stepper-driven
- Power requirements: 120 volt AC, 60 cycle, 10 amp power
- Compressed air: 3-4 cfm @ 65 psi if



680NR Top View shown  
with two labeling heads.